

4ビート & 2ビート

## 4ビート&2ビート

その名のとおりに、4分音符や2分音符の刻みを基調とするビートです。

1拍ごと(4ビート)、あるいは2拍ごと(2ビート)の大きな刻みにくわえて、3連符系の細かいニュアンスがプラスされるのが特徴です。

また、「8ビート」「16ビート」のように、キックやスネアが定型的なビートを刻むことはなく、ハイハットやライドシンバルがリズムの主演としてビートを引っ張っていくのも大きな特徴です。

## 4ビート&2ビートの特徴

- ハイハットやライドで4分音符or2分音符を基調とするリズムを刻む
- 3連符のフィールが基本
- キックやスネアに決まったパターンはなく、アクセント的に用いる
- シンバルの代わりにスネアのブラシを用いたパターンも

## シンバルレガート

「4ビート」や「2ビート」では、  
シンバルがリズムの主役となります。

その際、リズムの核となるのが  
「チーンチッチチーンチッチ」という特徴的なリズム。

これを、「シンバルレガート」といって、  
4ビートや2ビートにおけるリズムの要となります。

ライドシンバルによって演奏されることが一般的ですが、  
2ビートではハイハットによるシンバルレガートも演奏されます。

# ライドシンバルを用いた4ビート

パターン①

パターン②

パターン③

パターン④

# ブラシを用いた4ビート

Brush

パターン①

Brush

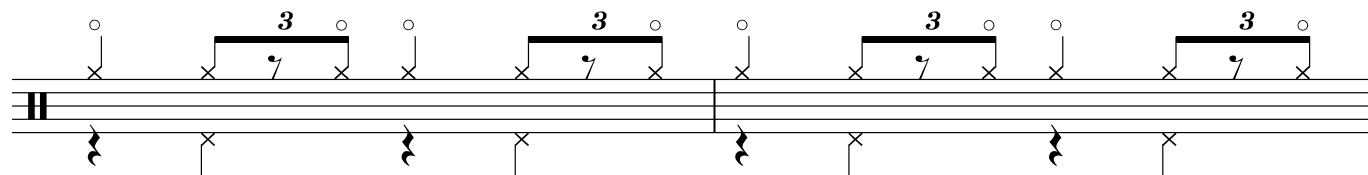
パターン②

Brush

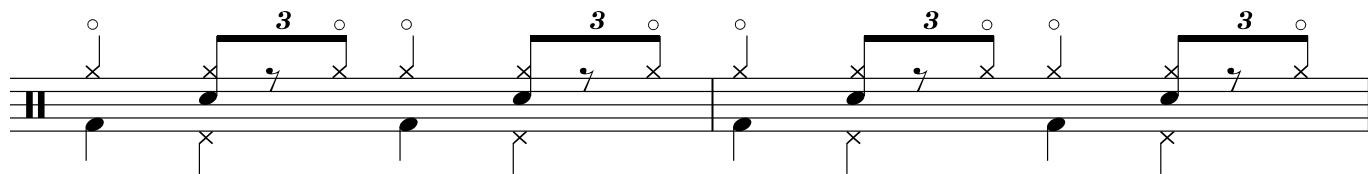
パターン③

# ハイハットを用いた2ビート

パターン①



パターン②



# ライドシンバルを用いた2ビート

パターン①

Musical notation for Pattern 1, consisting of two staves. The top staff is a treble clef with a key signature of one flat (Bb). The bottom staff is a bass clef. The pattern is divided into two measures by a vertical bar line. In the first measure, the top staff has a quarter note G4, a triplet of eighth notes (F4, E4, D4), and a quarter note C4. The bottom staff has a quarter rest, a half note G3, and a quarter rest. In the second measure, the top staff has a quarter note G4, a triplet of eighth notes (F4, E4, D4), and a quarter note C4. The bottom staff has a quarter rest, a half note G3, and a quarter rest.

パターン②

Musical notation for Pattern 2, consisting of two staves. The top staff is a treble clef with a key signature of one flat (Bb). The bottom staff is a bass clef. The pattern is divided into two measures by a vertical bar line. In the first measure, the top staff has a quarter note G4, a triplet of eighth notes (F4, E4, D4), and a quarter note C4. The bottom staff has a quarter rest, a half note G3, and a quarter rest. In the second measure, the top staff has a quarter note G4, a triplet of eighth notes (F4, E4, D4), and a quarter note C4. The bottom staff has a quarter rest, a half note G3, and a quarter rest.



# ジャズ・ワルツ

## ① 基本パターン

Musical notation for the basic jazz waltz pattern. The notation is on a single staff with a treble clef and a 3/4 time signature. The pattern consists of two measures. The first measure has a quarter note on the first line (C4), followed by a triplet of eighth notes (D4, E4, F4), and a quarter note on the first line (C4). The second measure has a quarter note on the first line (C4), followed by a triplet of eighth notes (D4, E4, F4), and a quarter note on the first line (C4). Above the staff, there are 'x' marks indicating snare hits: one at the start of each measure, one at the end of the triplet, and one at the end of each measure. Below the staff, there are 'x' marks indicating bass drum hits: one at the start of each measure and one at the end of each measure.

## ② スネアのゴーストノートを使ってノリをプラスしたパターン

Musical notation for the jazz waltz pattern with snare ghost notes. The notation is on a single staff with a treble clef and a 3/4 time signature. The pattern consists of two measures. The first measure has a quarter note on the first line (C4), followed by a triplet of eighth notes (D4, E4, F4), and a quarter note on the first line (C4). The second measure has a quarter note on the first line (C4), followed by a triplet of eighth notes (D4, E4, F4), and a quarter note on the first line (C4). Above the staff, there are 'x' marks indicating snare hits: one at the start of each measure, one at the end of the triplet, and one at the end of each measure. Below the staff, there are 'x' marks indicating bass drum hits: one at the start of each measure and one at the end of each measure. The notation includes ghost notes (indicated by a dot) on the snare line, which are placed on the first line (C4) at the end of the triplet in each measure.