

# ③ キーボードの奏法と記譜

# キーボードの記譜

A musical score for keyboard in 4/4 time. The score is written on two staves: a treble clef staff for the right hand and a bass clef staff for the left hand. Above the treble staff, eight chords are indicated: C, G/B, Am, Em/G, F, C/E, F, and G. The right hand part consists of block chords for each of these chords. The left hand part consists of a bass line with quarter notes and eighth notes, providing a harmonic accompaniment for the chords.

キーボードの記譜に使う「大譜表」。

上段に右手、下段に左手の音符を記譜する。

全て実音表記。

# 足鍵盤付きオルガンの記譜

C G/B Am Em/G F C/E F G

↓足鍵盤パート。実音のオクターヴ上で表記する。

オルガンでは足鍵盤用の五線を加えた「3段譜」を使用。  
手鍵盤は実音で、足鍵盤は実音のオクターヴ上で表記。

# 手が交差する場合の記譜法

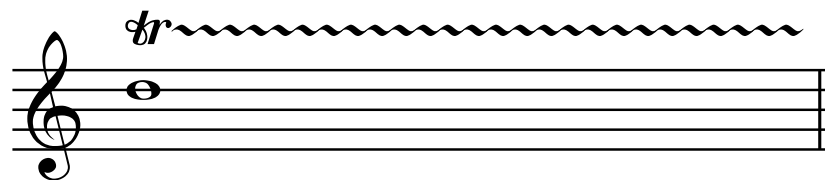
手が交差する場合はどちらの手で演奏するのか指定する

The image shows a musical score for piano with two staves. The right hand (treble clef) and left hand (bass clef) both play a triplet of eighth notes. The first two measures show the hands playing in parallel. In the third measure, the right hand plays the first two notes of the triplet while the left hand plays the third note. In the fourth measure, the left hand plays the first two notes while the right hand plays the third. In the fifth measure, the right hand plays the first two notes and the left hand plays the third. In the sixth measure, the left hand plays the first two notes and the right hand plays the third. The labels 'L.H.' are placed above the notes in the third and fourth measures, enclosed in red boxes, to indicate that the notes are to be played by the left hand. Below the bass staff, there are 'Ped.' markings and asterisks indicating pedaling instructions.

【 R.H. = 右手 L.H. = 左手 】

# キーボードの特殊な奏法

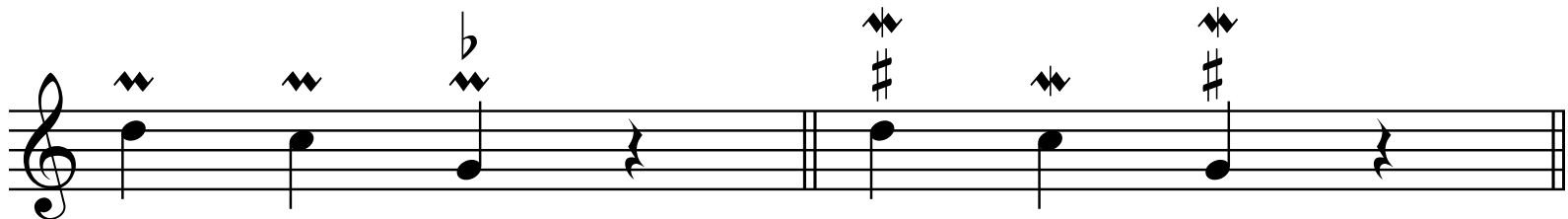
# トリル



# プラル・トリラーとモルデント

■ プラル・トリラー

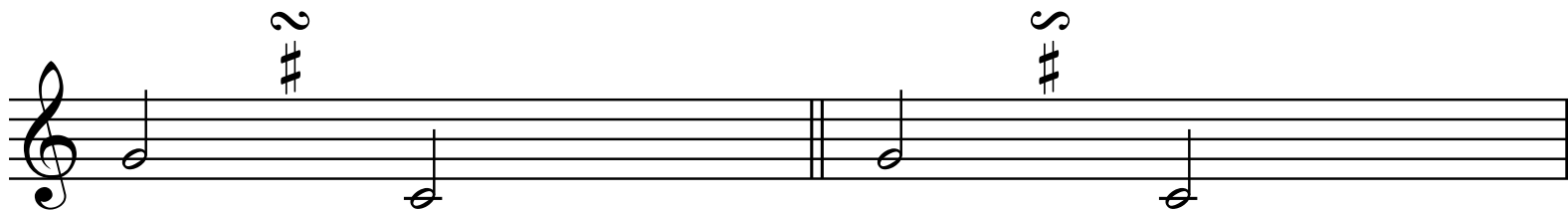
■ モルデント



# ターン

## ■ 通常のターン

## ■ 転回ターン



## ■ ターンの位置によるニュアンスの違い



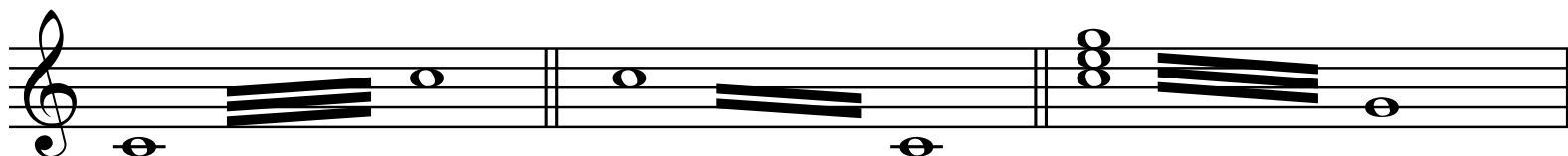


# トレモロ

■ 通常のトレモロ

■ 16分のトレモロ

■ 和音のトレモロ



# グリッサンド

■ 2音を指定したグリッサンド

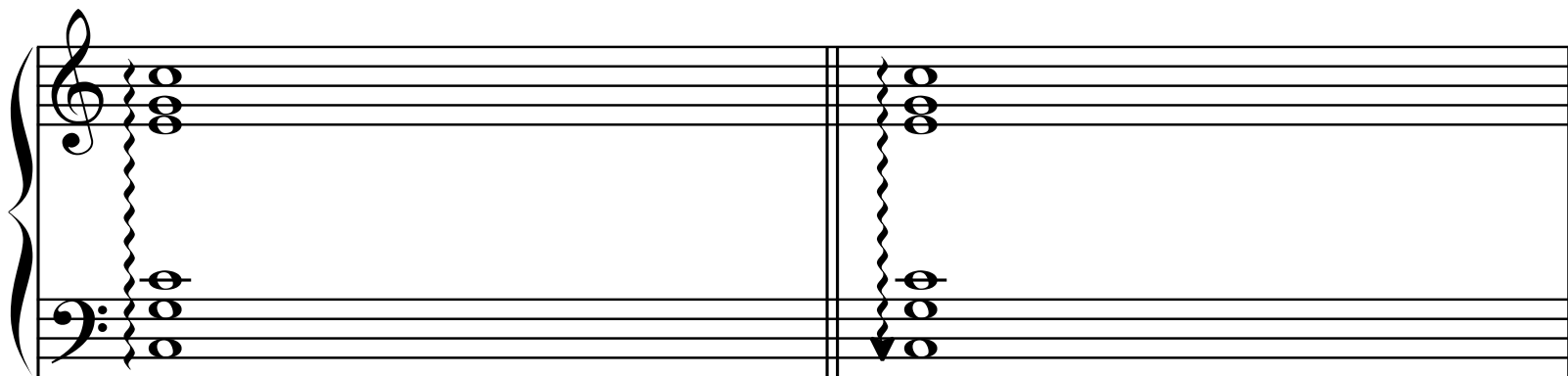
■ 指定の1音からのグリスダウン



# アルペジオ記号

■ 上向きアルペジオ

■ 下向きアルペジオ



# ペダル記号

The image shows a musical score for piano, consisting of two staves: a treble clef staff (right hand) and a bass clef staff (left hand). The right hand part features two measures of music, each starting with a triplet of eighth notes followed by a quarter note, with the label "L.H." above the first measure. The left hand part features two measures of music, each starting with a triplet of eighth notes followed by a quarter note, with the label "L.H." above the first measure. Below the bass staff, there are four pedal markings: "Ped." at the beginning of the first measure, an asterisk "\*" at the end of the first measure, "Ped." at the beginning of the second measure, and an asterisk "\*" at the end of the second measure. A red rectangular box highlights these four markings.

↑ペダル記号